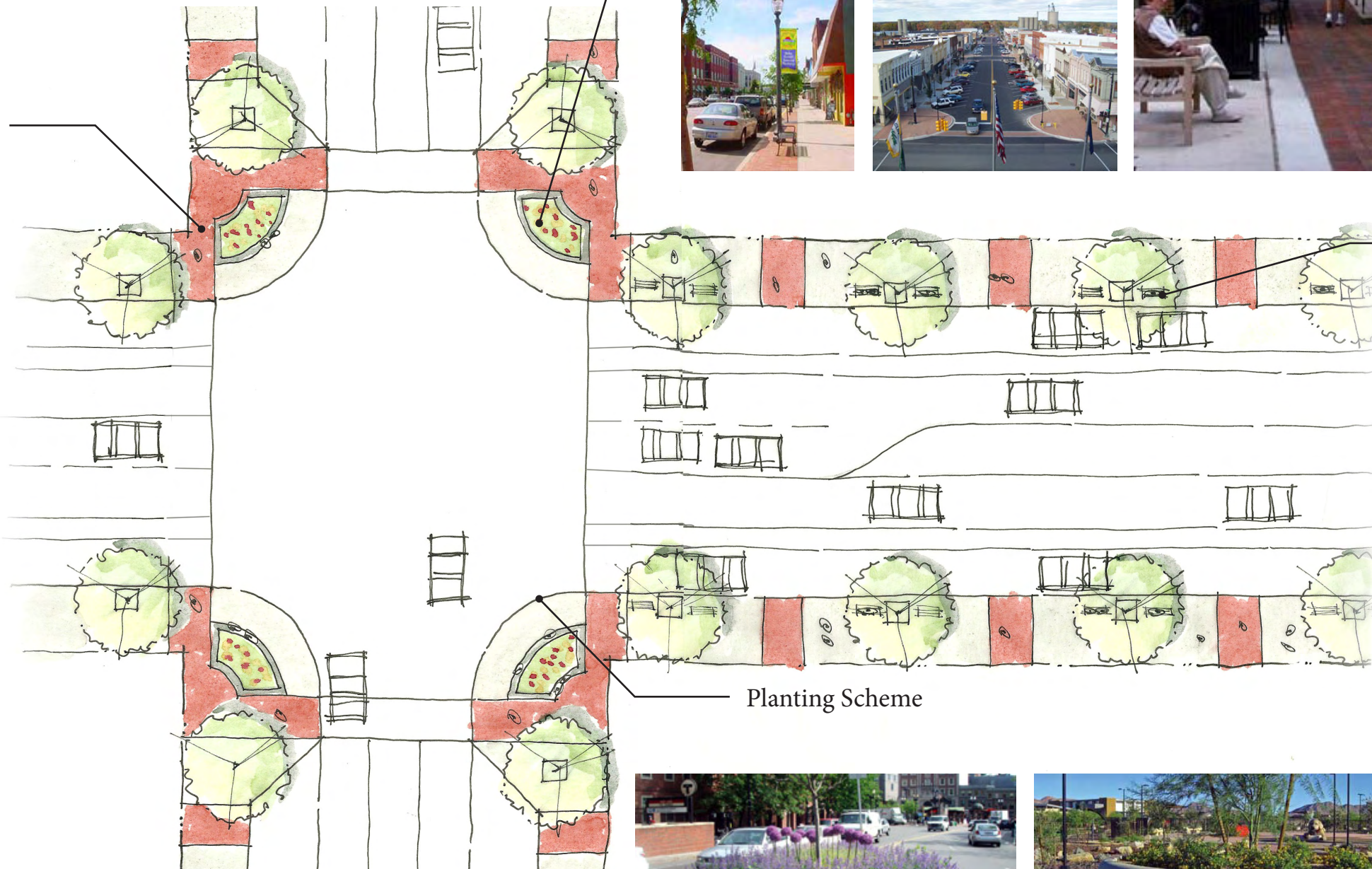


Concept 3: Form & Function

The design concept for Form and Function is based on updating the existing streetscape in a way that enhances Basin. New site features such as pedestrian lighting, seating and planters develop the character of the street. The paving is updated with accent banding at the intersections and entryway's to the businesses along the street. New wayfinding elements help visitors to the City locate the towns.

Hardscape Expressions



Site Details



Site Furniture



Planting Scheme

